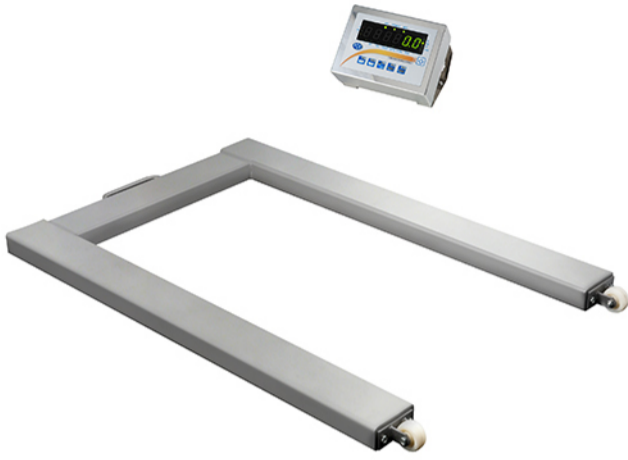


Floor Scale PCE-SD 1500U SST



**Calibrated U-shaped floor scale made of stainless steel / incl. transport rollers / IP68-IP65 /
Unit Counter / Summation function / analogue outputs 4 ... 20 mA, 0 ... 10 V optional**

The U-shaped floor scale is a calibratable scale that will be already calibrated before delivery. The measurements of the U-shaped floor scale are exactly accordant to serial EU palettes. The U-shape of the platform scale allows quick and easy loading of the scale even by means of forklifts. The four load cells of the U-shaped floor scale are IP68 protected and are embedded at the corners of the U-shaped scale. The weighing frame is made of massive stainless steel that is resistant to acids. The display of the U-shaped floor scale is IP65 protected and can be mounted either on a wall or placed on a table. There is also an option to extend the U-shaped floor scale with interfaces, e.g. RS-232, USB, LAN, 4-20 mA etc., although it should be considered that this would affect the IP protection. For more comfortable transport and moving from one location to another, the U-shaped floor scale also features rollers at its pillars. Functions of the U-shaped floor scale are automatic tare, unit counter, tare memory, gross / net weighing, percentage calculation, threshold measurement etc.

- ▶ Calibratable incl. initial calibration before delivery
- ▶ Made entirely of IP68-IP65 stainless steel
- ▶ Unit Counter
- ▶ Summation function
- ▶ MAX / MIN indication
- ▶ Percentage calculation
- ▶ Measurement on formula

- ▶ Statistics calculation
- ▶ Animal weighing function
- ▶ Gross / net indication
- ▶ Tare memory
- ▶ Threshold weighing MIN / MAX / OK
- ▶ 3 potential-free contacts optional
- ▶ Analogue outputs optional (4-20 mA / 0-10 V)

Subject to change

Specifications

Model	Measurement range	Readability	Calibration value	Minimum load *
PCE-SD1500U SST	1,500kg	0.5kg	0.5kg	10kg
PCE-SD3000U SST	3,000kg	1kg	1kg	20kg

***The minimum load is defined by the load, from which the calibration authority tests the accuracy of the scale. The waterproof steel scale shows even lower weights, but these are not valid for custody transfer.**

Calibration Class	MIII (is calibrated before delivery)
Unit Counter	Counting by reference values
Tare function	Multiple taring for the whole measurement range
Interface	Optional RS-232 / LAN / USB Description of interface (please consider IP code)
Display	LED with 20 mm digit height
Power Source	~230V, 50Hz, 8VA
Protection Class	Load Cells IP 68 / Display IP 65
Operational temperature	-10 °C ... + 40 °C
Weight	approx. 70 kg

More information

More product info



Similar products



Subject to change